

1*CG: nu skal du se her har vi Martin
now must you see here have we Martin
just have a look now here's Martin
((CG is pushing Eric in wheelchair
into his room towards robodoc))

2* (.9)

3*PAT ((Eric lifts up his hand #1
greeting Robodoc and smiling))

4*CG: haaha[haha]
((stops pushing wheelchair))

5*GP: [goddav Eric]
[good day Eric]

6* (1.8)

7*GP: nu er du ved at vænne dig til at møde mig
now are you about to get used to meeting me
now you are getting used to meeting me

8* [(.)på] #2 skærmen
[(.) on] the screen
[(.) on the] screen

9*PAT [((pat nods))]

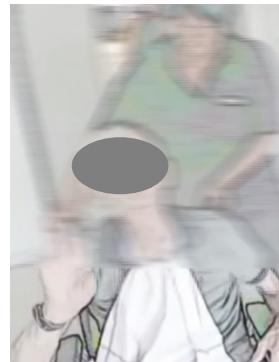


Fig #1 Eric greets GP using gesture and smile



Fig #2 Eric nods in response to GP' utterance